

FLAX

WATER PURIFIER

flax.id



Reasons for choosing **Flax Water Filter**

POE (Point Of Entry)

Industrial Grade Water Filter

- ✓ Advanced water treatment technology
- ✓ 10 year tank warranty
- ✓ Water quality guarantee
- ✓ Expert specialist in water treatment
- ✓ Tailored engineering design for each customer
- ✓ Free service for media replacement
- ✓ Guaranteed spare parts
- ✓ Lifetime service warranty
(by enrolling in the annual maintenance program)
- ✓ Free water issue consultation
- ✓ Free laboratory testing parameters
PH, Color, Turbidity, EC, TDS, Fe, Mn,
Cl₂, CaCO₃



Here are the benefits you will get
If you have Flax



NSF & HALAL
Certification



Free Consultation
Water Level



Free Laboratory
Test



Industrial Grade
Home Filter

Proven effective in **Addressing**

- ODOR
- TASTE
- TSS
- MANGANESE
- CHLORINE
- COLOR
- IRON
- MICROBIOLOGI/VIRUS



Extra filtration
max 1 micron



Extra filtration
max 1-5 micron



Maximum filtration
for odor and color



CRYSTAL

- Color • Odor • Taste
- Chlorine • Heavy Metal
- Organic • Chemical

Crystal Pro



Crystal X



Crystal T



Crystal S



LUNA

- Iron • Hidrogen Sulfida
- Hidrogen Dloksida • Odor
- Manganese • Turbidity
- Color • Scale

Luna Pro



Luna X



Luna T



Luna S



PENTA

- Clarity
- Total Suspended Solids

Penta



Penta S



ION

- Calcium • Magnesium
- Hardness

Ion



ULTRA VIOLET

- Virus
- Bakteri
- Mikrobiologi



Crystal Series

FLAX
WATER TREATMENT



Odor



Taste



Chlorine



Color



Heavy
Metal



Organic



Chemical



Crystal S

Designed with **Carbon Micropore** technology, containing amorphous media material, with a large surface area and internal pore structure through activation process. Highly effective in removing **odor, color, heavy metals, organics, chemicals**, improving **taste**, and effectively absorbing **chlorine** in water. The second filter: **CLEARTEC 01** is an absolute filtration with the ability to filter very fine particles up to **1 micron**.

Crystal X

Designed with **Carbon Micropore** technology, it contains amorphous media material with a large surface area and internal pore structure achieved through activation process. Highly effective in removing **odor, color, heavy metals, organics, chemicals**, improving **taste**, and effectively absorbing **chlorine** in water. The second filter, **CLEARTEC 05**, is an absolute filtration with the ability to filter very fine particles up to **5 microns**.

Crystal T

The **CLEARTEC IVY** cartridge, featuring compact media with **Carbon Micropore** technology, is made of amorphous material with 5-micron pore size. Highly effective in eliminating **odor, color, heavy metals, organics, chemicals**, improving taste, and efficiently absorbing **chlorine** in water.

Crystal Pro

The first filter is designed with **Manganese Oxide Coating** technology, containing natural rock media with a layer of manganese dioxide. The second filter contains a combination of natural rocks with mesh size 6-8, effectively improving water clarity. The third filter, **CLEARTEC IVY**, features compact media with Carbon Micropore technology made from amorphous material with 5-micron pore size. Highly effective in removing **odor, color, heavy metals, organics, chemicals**, improving **taste**, and efficiently absorbing **chlorine** in water.

Luna Series

FLAX
WATER TREATMENT



Iron



Manganese



Hydrogen
Sulfida



Hydrogen
Dioksida



Odor



Color



Scale



Turbidity



Luna Pro

Designed with **Manganese Oxide Coating** technology, containing natural rock filter media with particle size of 3-5mm, the manganese dioxide layer is highly effective in **clarifying** water, reducing **iron, manganese, hydrogen sulfide, hydrogen peroxide, odor, color, scale, turbidity**, in water. The second filter, **CLEARTEC 01**, is an absolute filtration with the ability to filter very fine particles up to **1 micron**. The third filter, **CLEARTEC IVY**, features compact media with Carbon Micropore technology made from amorphous material with **5-micron** pore size.

Luna T

Designed with **Manganese Oxide Coating** technology, it contains natural rock filter media with particle size of 3-5mm. The manganese dioxide layer is highly effective in **clarifying** water, reducing **iron, manganese, hydrogen sulfide, hydrogen peroxide, odor, color, scale, and turbidity** in water. The second filter, **CLEARTEC IVY**, features compact media with Carbon Micropore technology made from amorphous material with **5-micron** pore size.

Luna X

Designed with **Manganese Oxide Coating** technology, containing natural rock filter media with particle size of 3-5mm, the manganese dioxide layer is highly effective in **clarifying** water, reducing **iron, manganese, hydrogen sulfide, hydrogen peroxide, odor, color, scale, turbidity**, in water. The second filter, **CLEARTEC 01**, is an absolute filtration with the ability to filter very fine particles up to **1 micron**.

Luna S

Designed with **Manganese Oxide Coating** technology, it contains natural rock filter media with particle size of 3-5mm. The manganese dioxide layer is highly effective in **clarifying** water, reducing **iron, manganese, hydrogen sulfide, hydrogen peroxide, odor, color, scale, and turbidity** in water. The second filter contains a combination of natural rocks with mesh size 6-8, effectively improving water clarity.

Penta Series

FLAX
WATER PURIFIER



Clarity



Suspended Solid



Penta

Designed specifically to filter **suspended solids (TSS)** in water. Significantly reduces water turbidity with a filter media composition made of natural rocks with sizes 6-8 mesh and 14-20 mesh. Capable of absorbing and binding impurities present in water containing strong acids such as H_2SO_4 , $MgCl_2$, thus maintaining the **pH** balance in water.

Penta S

Designed specifically to filter **suspended solids (TSS)** in water. It significantly reduces water turbidity with a filter media composition made of natural rocks with sizes 6-8 mesh and 14-20 mesh. Capable of absorbing and binding impurities present in water containing strong acids such as H_2SO_4 , $MgCl_2$, thus maintaining the **pH** balance in water. The second filter, **CLEARTEC 01**, is a filter with 1 micron absolute pores, functioning as a filter for very fine particles in water.

Ion Series

FLAX
WATER TREATMENT



Calcium



Magnesium



Hardness



Designed with **Ion Exchange** technology to reduce **water hardness**. Hard water contains **calcium (Ca) and magnesium (Mg)** ions, causing white spots, pipe blockages, difficulty in lathering, white scale deposits, and a bitter taste. Using high-quality resin material, ions of Ca and Mg can be easily bound into the chemical chain of the resin despite fluctuations in pH and temperature in the raw water. The **Ion Exchange** process is also capable of reducing **iron (Fe) and manganese (Mn)** levels, which cause yellow or black discoloration and an oily film on the surface of the water.

The advantage of FLAX **Ion Exchange** technology is its ease of regeneration (reactivation) when the resin becomes saturated, making it highly efficient and environmentally friendly.

Ultra Violet Series

Ultraviolet (UV) with a wavelength of 200 – 300 nm, commonly referred to as UV-C, is a disinfectant technology that works **effectively in killing bacteria, spores, and viruses** without using chemicals. The electromagnetic waves of UV destroy the RNA/DNA chains of microorganisms, preventing them from replicating.

With accurate water data calculations and installation with the correct UV intensity injection, the desired sterilized water quality can be achieved.



Catridge Filter Series



Catridge Cleartec **01**

CLEARTEC 01 is a filter with 1 micron absolute pores, functioning as a filter for very fine impurities in water.



Catridge Cleartec **05**

CLEARTEC 05 is a filter with 5 micron pores, serving as a filter for fine particles in water.



Catridge Cleartec **Ivy**

It functions to absorb organic materials and contaminants, thereby providing better tasting water, reducing odor, and improving color.

Specifications of **Flax** Size

FLAX
WATER PURIFIER

MEGA

Diameter : 46 cm
Height : 188 cm



ULTRA

Diameter : 40 cm
Height : 185 cm



MAXI

Diameter : 34 cm
Height : 150 cm



PURE

Diameter : 25 cm
Height : 150 cm



Automatic Feature

With Flax Water Purifier's **Automatic Valve technology**, it simplifies water filter maintenance and makes the water filter work more effectively. **Automatic backwash** can be set with time settings, making water quality more stable and maintenance practical.

Getting to Know **Flax** Drinking Water Filter

FLAX
WATER TREATMENT

POU (Point Of Use)



Certification
ISO 9001



Experts water
treatment



Experience
10+ years



Leading
Technology



Advantages of Flax Drinking Water Filters



No colored



Free Bacteria



No Sticky

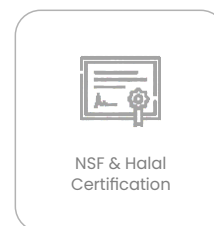


No Taste



No Odor

- 1 Reverse Osmosis technology with filtration down to 0.0001 Micron.
- 2 Removing 99.99% of pollutants in water, dirt, rust, organic matter, heavy metals, bacteria, and viruses.
- 3 Cooling with Block Technology.
- 4 With hot water faucet lock, safe for children.
- 5 Nano Silver Technology for sanitation.
- 6 ISO 9001



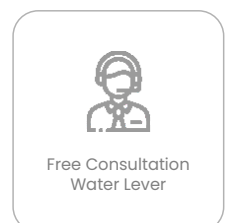
NSF & Halal
Certification



Free Laboratory
Test



Industrial Grade
Home Filter



Free Consultation
Water Lever

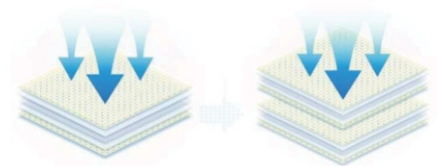
Flax Purely

FLAX
WATER PURIFIER



Advanced T-Filters : More Convenient and Safe

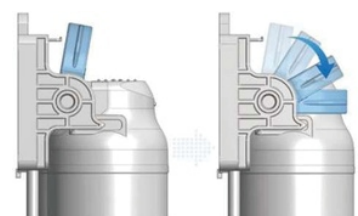
About 40% Larger Capacity than T-Filters



FLAX New Filtration system (AT-Filter)



New LEVER-TYPE LOCK
for Enhanced Convenience and Safety



Spesification Flax Purely

Dimensions (L x W x H)	290(W) x 506(D) x 474(H) mm
Weight	17,6 kg
Color	Beige
Purification Stage	4 (Four)
Flow Rate	12 liter/Hour
Tank Capacity	A : 4,6 liter C : 1 liter H : 0,57 liter
Operating Pressure	1 bar
Membrane	RO Membran Korea Selatan 75 GPD 0,0001 Micron
Water Temperature	Cool : 2 - 5 C Hot : 85 - 90 C
Voltage / Electrical Frequency	220V/60Hz 80 W, Max 1,600 W (saat pemanas dan kompresor aktif)
Power Consumption	50 - 60%
Water Purity Recovery Ratio	(1+2)Sedi + PreCarbon, (3)RO Membran 75 GPD, (4) PostCarbon
Certification	SASO, ISO14001, ISO9001, NSF
Cooling Technology	Block



Flax Onyx

Onyx Nano Filtration

FLAX
WATER PURIFIER



- ✓ Easy and quick filter replacement with the SQC (Sanitary Quick Change) method
- ✓ Safety guaranteed through the firm structure (Regulations of the NSF structure test satisfied)
- ✓ Use of NSF-approved materials
- ✓ Simultaneous use of various uses with the abundant storage space
- ✓ Wide applications in coffee machines, icemakers, and steamers etc
- ✓ Nano Korea filter has a size of 1/500 micron or 0.002 micron.



Spesification Flax Onyx

Dimensions (L x W x H)	187(W) x 135(D) x 496(H) mm
Weight	16,5 kg
Color	White
Purification Stage	6 (six)
Flow Rate	340 liters/hour (*minimum pressure required)
Operating Pressure	0,6 bar - 5 bars
Membrane	South Korea Nano Filtration Membrane 0.002 Micron
Water Temperature	5 C - 35 C
Voltage / Electrical Frequency	220V/50Hz
Power Consumption	22 W (UV Sterilizer)
Water Purity Recovery Ratio	(1)PP 5 Micron, (2)Sedimen, (3)Electro Positive Membran, (4)Carbon Block (5)Scale Inhibitor, (6)UV Sterilizer
Certification	SASO, ISO14001,ISO9001,NSF



Alfa Pure

RO 100 GPD

FLAX
WATER TREATMENT

Salient Features

- ✓ Ultra-thin water purifier without cabinet.
- ✓ 8 specialized cores (3 coarse filters, RO Membrane (Korea) that can be changed quickly, 4 functional filters)
- ✓ Eliminate 99.99% of contaminants including in
- ✓ Double the filter capacity



Spesifikasi

Dimensions (L x W x H)	290(W) x 170(D) x 420(H) mm
Weight	9 kg
Color	White
Purification Stage	8 (eight)
Flow Rate	16 liters/hour
Tank Capacity	3,2 liters
Operating Pressure	1 bar - 1,5 bars
Membrane	RO Membrane South Korea 100 GPD 0.0001 Micron
Voltage / Electrical Frequency	220V/50Hz
Power Consumption	20 W
Water Purity Recovery Ratio	50 - 60%
Certification	SASO, ISO14001,ISO9001,NSF



Alfa Pure

RO 400 GPD

FLAX
WATER TREATMENT

For larger kitchen needs, such as restaurants, bars, and others

- ✓ Korean RO Membrane 400 GPD
- ✓ Korea RO Technology 0,0001 Micron
- ✓ Nano Silver Filter
- ✓ Pressure Tank : 10,7G / 40 Liters



BIG Alfa Pure

1500+ L/Day

Spesification

Purification Stage	6 (Six)
Flow Rate	63 Liters/Hour
Tank Capacity	40 Liters
Operating Pressure	1 bar - 2 bars
Membrane	RO Membrane South Korea 100 GPD 0.0001 Micron
Voltage / Electrical Frequency	230V (DC-24V 1.2 mA)
Power Consumption	80 W
Water Purity	50 - 60%
Recovery Ratio	
Certification	SASO, ISO14001,ISO9001,NSF

Purification Stages

- 1 PP 5 Micron
- 2 UDF
- 3 CTO
- 4 RO Membrane 100 GPD x 4
- 5 GAC-T33
- 6 Nano Silver

Diamond Pure

RO Built-in Water Dispenser



Specification

Dimensions (L x W x H)	290(W) x 370(D) x 1,118(H) mm
Weight	29 kg
Color	Black/White
Purification Stage	5 (five), 8 integrated stages
Flow Rate	16 liters/Hour
Tank Capacity	C: 1,5 liters / H : 1 liters
Operating Pressure	1 bar - 1,5 bars
Membrane	RO Membrane South Korea 100 GPD 0.0001 Micron
Water Temperature	C : 8-10 C / H : 80-90 C
Voltage / Electrical Frequency	220V/50Hz
Power Consumption	C : 90 W / H : 500 W
Water Purity Recovery Ratio	50 - 60%
Certification	SASO, ISO14001,ISO9001,NSF

Salient Features

5 Filter Stages

PP 5 Micron - OCB - CTO -
RO Membran 100 GPD - GAC-T33

Integrated 6 Stagepure

RO filtration system

Cooling Water

By Block Technology

Hot Faucet lock

is safe for young children

Removes 99.99%

pollutants in waterimpurities,
rust, organic matter,
heavy metals

Oxy Pure

RO Built-in Water Dispenser



Spesification

Dimensions (L x W x H)	320(W) x 400(D) x 1,070(H) mm
Weight	28 kg
Color	Black
Purification Stage	5 (five), 8 integrated stages
Flow Rate	16 liters/hour
Tank Capacity	C&A : 3,2 liters / H : 1 liters
Operating Pressure	1 bar - 1,5 bars
Membrane	RO Membrane South Korea 100 GPD 0.0001 Micron
Water Temperature	C : 15-20 C / H : 80-90 C
Voltage / Electrical Frequency	220V/50Hz
Power Consumption	C : 65 W / H : 430 W
Water Purity Recovery Ratio	50 - 60%
Certification	SASO, ISO14001,ISO9001,NSF

Salient Features

5 Filter Stages

PP 5 Micron - OCB - CTO -
RO Membran 100 GPD - GAC-T33

Integrated 6 Stagepure

RO filtration system

Cooling Water

By Block Technology

Hot Faucet lock

is safe for young children

Removes 99.99%

pollutants in waterimpurities,
rust, organic matter,
heavy metals



Filter PP Sediment 5 mikron

- Removing insoluble solids such as water dust, sand, and mud
- Protecting the Reverse Osmosis membrane from harmful particles



Filter GTO-GAC

- Removing chlorine and excessive organic content in water
- Removing gases that cause unpleasant odors in water
- Absorbing color



Filter PP Sediment 1 mikron

- Removing fine insoluble solids such as silica and mud
- Protecting the Reverse Osmosis membrane from harmful particles



Membran Reverse Osmosis

- Producing clean water free from harmful mineral content
- Filtering viruses, bacteria, and very small particles down to 0.0001 microns
- Lowering TDS (Total Dissolved Solids)
- Removing salty taste from water



Filter GAC-T33

- Removing organic matter, color, and odor present in water
- Improving the taste of water to make it more pleasant, sweet, and suitable for our body's needs.



Filter Mineral

- Providing additional beneficial minerals for the body
- Raising pH levels to neutralize excess acid
- Making the taste of water less BITTER



Filter Far Inframerah

- Facilitating the ion absorption process in the body
- Reducing fatigue sensation in the body's nerves



Filter Nanosilver

- Removing viruses and bacteria present in water
- Maintaining the cleanliness of water intended for consumption



The importance of conducting content tests on water

Here's the reason why:

Just like a doctor, a doctor will ask several questions, such as how the patient feels, what their complaints are, and even perform blood tests if necessary. This is necessary so that the doctor can diagnose what disease the patient is suffering from and provide appropriate treatment for the patient to recover from their illness.

Similarly, with water, it is necessary to conduct Water Content Tests, to determine the problems with the water and the appropriate solutions to fix them.

Before
using the Flax
Water Filter



After
using the Flax
Water Filter

Water Treatment System

POE & POU

Basically, there are only two main locations to install a water treatment system. Which of the two systems you need depends on what you want to achieve. One is Point of Entry (POE) water treatment, the other is Point of Use (POU) water treatment.



What is the difference?

Imagine a water supply where the local municipality or other supplier delivers water to homes, office buildings, factories, plants, or other facilities. At the point where the supply enters the building, it is connected to a water meter. The meter side is your responsibility and cost. You may be stuck with the water as it is delivered, but you don't have to like it or be satisfied with its quality (or lack thereof). There are many POE and POU systems that can help you improve the water quality before you drink it, cook with it, or bathe in it.



Point of Entry (POE)

Point of Entry (POE) water treatment systems are installed on your meter side with the aim of treating all incoming water before it enters the individual supply lines that feed your laundry, bathroom (including toilets), dedicated outdoor faucets, and others, as well as your kitchen. POE systems often include water softeners, large carbon block filters, and some systems designed specifically to remove (or trap) sediment, taste, and foul odors. POE systems are sometimes considered as pre-filters.

FLAX
WATER TREATMENT



Point of Use (POU)

A Point of Use (POU) water treatment system is installed on the individual source line in front of one or all of the building's faucets, taps, or other specific outlets used for dispensing water for drinking, cooking, or bathing. A good POU system is often expected to capture anything that passes through the POE system.



Application

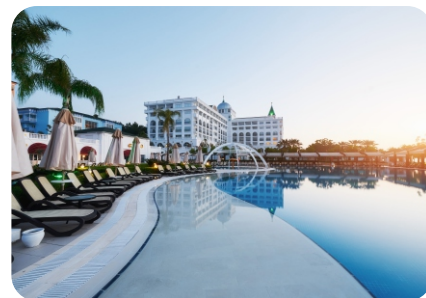
Flax water filter can be applied to various clean water needs.



House



Restaurant



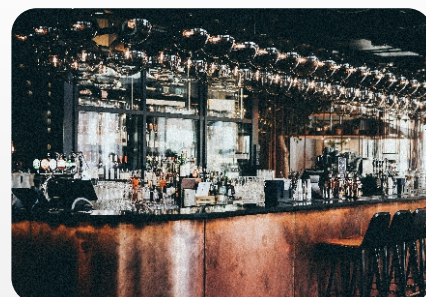
Hotel & Resort



Public Facility



Building



Bar



Hospital



Factory



School



Coffee Shop



Convenient Store



Swimming Pool

Application

Flax water filter can be applied to various clean water needs.



Kitchen



Spa & Beauty Clinic



Dentist



Salon



Pastry Shop



Villa



Hydroponic



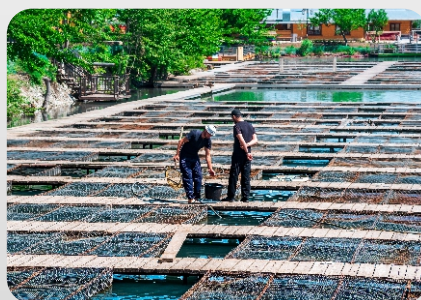
Fish pond



Aquascape



Poultry



Aquaculture



Agriculture

Commercial package

Hotel - Restaurant - Cafe

Onyx Package

Laju Aliran

6.0LPM (1.5 GPM)

Operating pressure

0,7 ~ 7 kgf/cm²
/ 0,68 bar ~ 6,8 bar

"Temperature"

5~35°C



Alfa Pure 400 GPD

Package

Capacity

63.00 ± Liter per Jam

Operational power

230-230V

(DC-24V 1.2mA)



Alfa Pure RO 400 GPD

Full range design package

Flax Water Purifier

Point of Entry (POE)

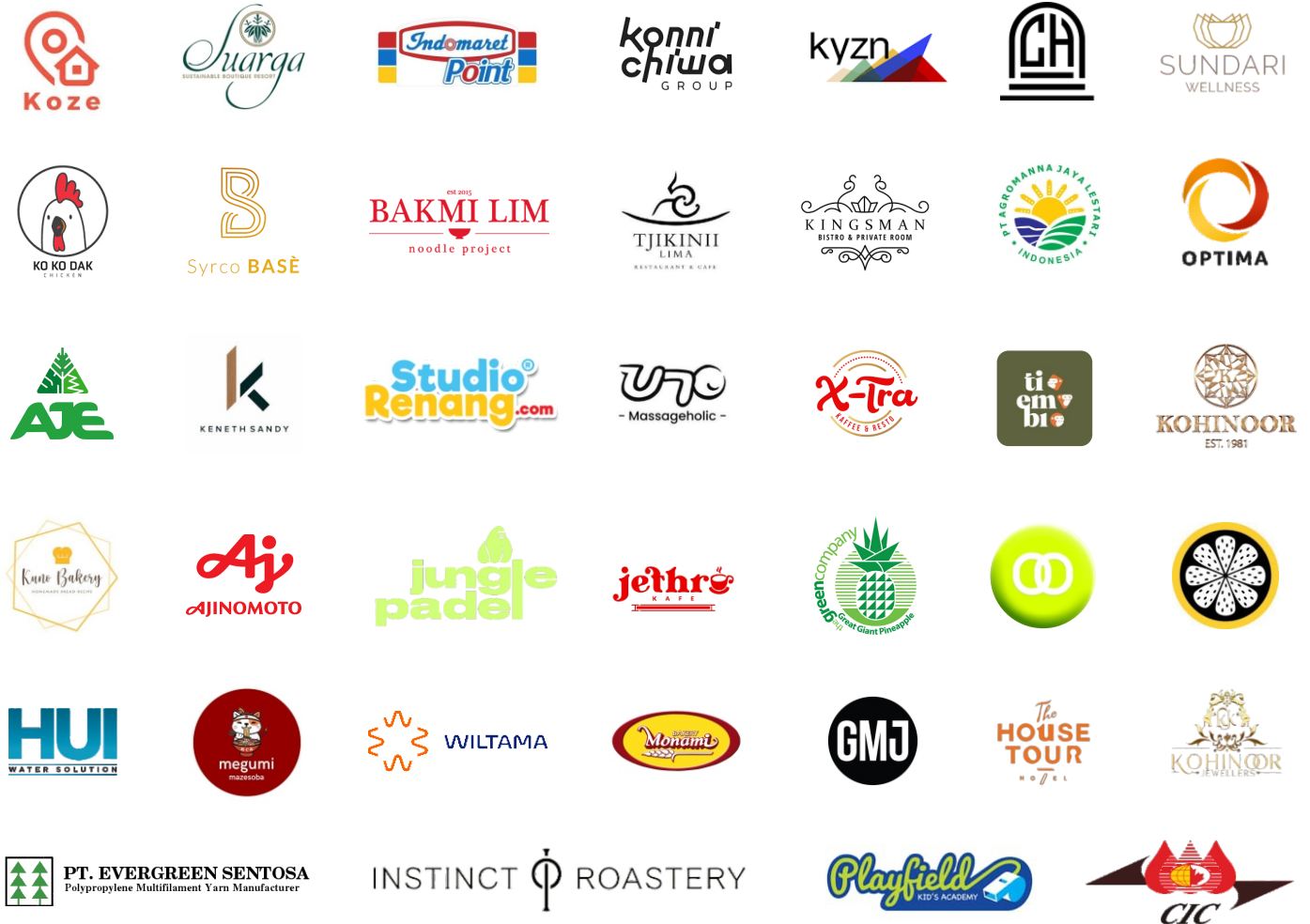


Point of Use (POU)



Our Client

Filter Water Purifier sare already used by many large companies.



For More Information

Please contact us at



+62 811-9933-100



+62 811-8683-310



<https://flax.id/>



APL Tower, 26th Floor, Unit T3,
Jl. Letjen S. Parman, Kav 28, Petamburan,
Grogol Petamburan, West Jakarta



FLAX

WATER TREATMENT

Complete Solution for All
Water Purification Needs



flax.id



FLAX

WATER PURIFIER

 +62 811-9933-100

 +62 811-8683-310

APL Tower, 26th Floor, Unit T3, Jl. Letjen S. Parman, Kav 28,
Petamburan, Grogol Petamburan, West Jakarta

flax.id

